

The CHNT logo is displayed in white text on a blue background. The letters 'CHNT' are in a bold, sans-serif font, with a small red square positioned above the letter 'H'.

CHNT

The logo for Zhengtai Power, featuring the Chinese characters '正泰电源' in white on a blue background.

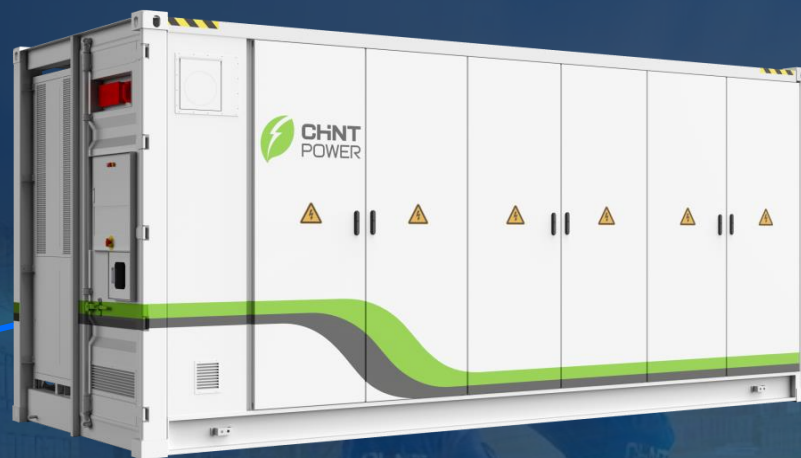
正泰电源

The background image shows a large-scale energy storage system at night. In the foreground, two workers wearing yellow hard hats and blue uniforms are looking at a tablet. Behind them are several large, white, modular battery storage units. To the left, solar panels are visible. In the background, there are high-voltage power lines and a city skyline with illuminated buildings under a dark blue sky.

CPS BESS Solutions for Grid Scale application

Professional Solar & BESS supplier, integrator

New technology trend



High specific energy

5.0 MWh 20ft ISO HC



High performance

Uniform temperature, Prolong life-span,
Reduce consumption, Improve efficiency



High safety

All-around, Universe safety

ESS solution: Liquid Cooling Unit



- 5.0MWh, 37% highest specific energy solution for liquid cooling.
- Separated chamber design, get better ATEX
 - 20ft standard high container, convenient for transportation.
- Commissioned in factor and full populated transportation.
- IP54 protection grade, C3~C5 salt spray protection grade.
- Fire fighting system: ASD, NOVEC1230 fire fighting, Water Spray, and other particular control logic as a complete solution.
- Zone 4 anti-seismic design; 90min firewall design.

ESS solution: Liquid Cooling Unit



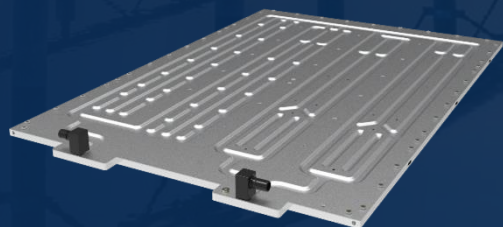
High specific energy, High performance, High safety

5.0MWh 20ft ISO HC



- POWER BLOCK 2.0 liquid cooling BESS continue the Power Block series **Ultimate design** product concept to achieve **37%** increase of specific energy by high efficiency grouping technology.
- Reduce site installation & commission work by integrative system design and full populated installation.

Patented borderless liquid cooling plate design, Pack group efficiency **6.7%**



Compatible with all major 280~320Ah cell, Pack specific energy **14.2%**



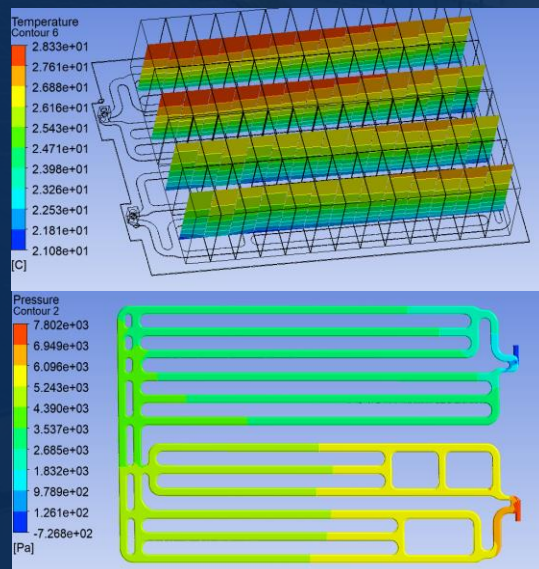
Ultimate optimized structure and integrated design, System group efficiency **12.4%**



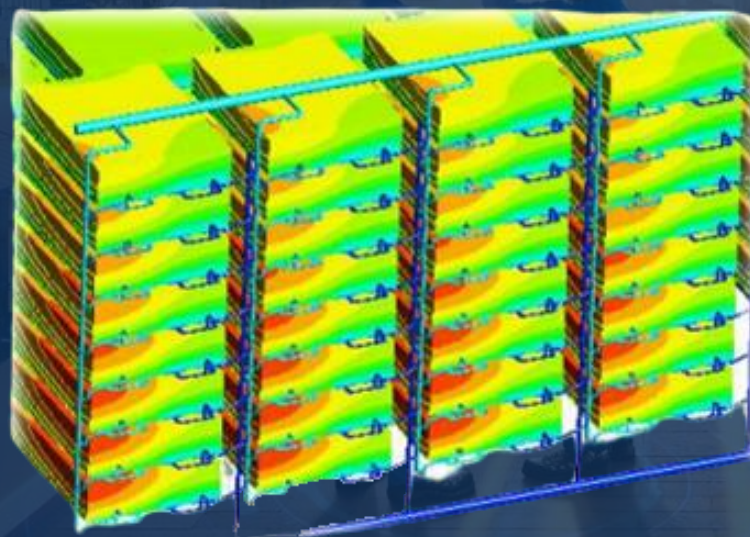
High specific energy, High performance, High safety

Uniform temperature, Prolong life-span,
Reduce consumption, Improve efficiency

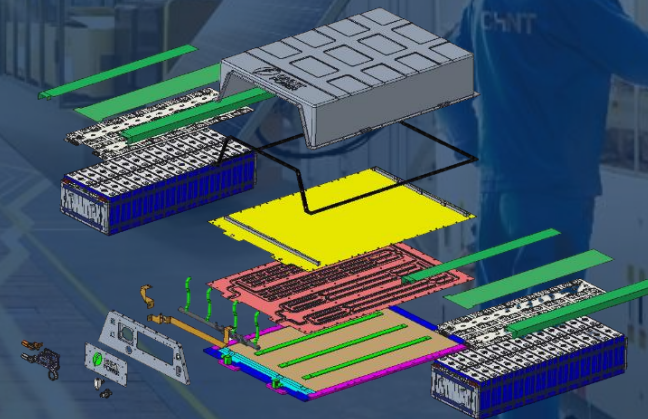
Low flow resistance large flow
narrow range, Cell temperature
difference in Pack $<1.5^{\circ}\text{C}$



Pack level cooling capacity control,
Cell temperature difference in
system $<2^{\circ}\text{C}$



New insulation and heat
conduction design, Improve heat
exchange efficiency 10%



High specific energy, High performance, High safety

